

44 CE - WALL BOXES IN GW PLAST® 75; GWT 650°C

TECHNICAL CHARACTERISTICS

Standard: IEC 60670-1; IEC 60670-22; CEI 23-48	Material: GW PLAST 75, versions with smooth wall, Halogen-Free according to EN 50267-2-2
Degree of protection: IP 44; IP 55; IP 56	Impact resistance: IK 07 (Box IP 44) IK 08 (Box IP 55 e IP 56)
Protection against indirect contacts: Double insulation - *	Resistance to abnormal heat and fire: Thermo-pressure with ball 85°C Glow wire test 650°C
Installation temperature: Max +60°C Min -25°C	

(*) Full insulation to EN 61140 Standard, obtainable with screwcaps GW 44 622 or GW 44 623 or fixing brackets GW 44 621 in insulating material.

BEHAVIOUR WITH CHEMICAL AND ATMOSPHERIC AGENTS

Saline solution	Acids		Bases		Solvents				Mineral oil	UV rays
	Concentrated	Diluted	Concentrated	Diluted	Hexane	Benzol	Acetone	Ethyl alcohol		
Resistant	NOT resistant	Resistant	Resistant	Resistant	Limited resistance	NOT resistant	NOT resistant	Limited resistance	Limited resistance	Limited resistance



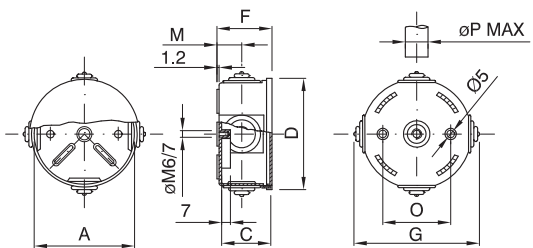
44 CE RANGE

TECHNOPOLYMER SURFACE MOUNTING WATERTIGHT JUNCTION BOXES



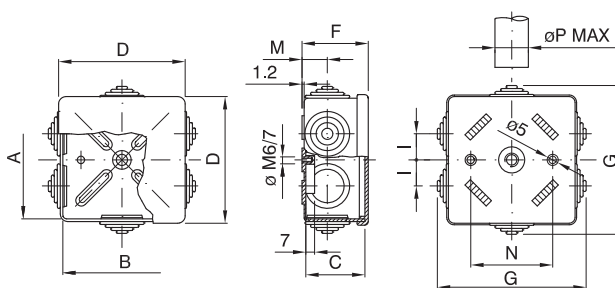
DIMENSIONAL TABLES

44 CE RANGE - JUNCTION BOXES WITH CABLE ENTRIES



CODE	A	C	D	F	G	M	O	P
GW 44 001	65	35	72.5	40.5	88	17	40	20
GW 44 002	80	40	87.5	45.5	104.5	17	50	20
GW 44 052								

44 CE RANGE - JUNCTION BOXES WITH CABLE ENTRIES



CODE	A	B	C	D	F	G	I	M	N	P
GW 44 003	80	80	40	87.5	45.5	110	20	17	50	20
GW 44 053										